



YOUR WEDDING
EXACTLY HOW YOU PICTURED IT



Folly Farm Centre is an environmentally sustainable, countryside wedding venue nestled in the heart of a 250-acre nature reserve, yet conveniently located just 10 miles from Bristol and Bath.

As one of Somerset's hidden gems, Folly Farm offers peaceful seclusion and the most breath-taking views across Chew Valley Lake and the Mendip Hills; an Area of Outstanding Natural Beauty.

Surrounded by wildlife and ancient woodlands, Folly Farm is perfect in every season; from the carpets of Spring bluebells and wildflower meadows of Summer, to the golden tones of Autumn and the dramatic Winter skies, the backdrop for your day is sure to be beautiful.

All weddings at Folly Farm include exclusive use of the entire venue, including all the 18th-century farm buildings, for a unique and completely private celebration. There will be no hidden extra costs, our in-house caterers and dedicated wedding team will help guide you through the options; leaving you to invite your close family and friends to share the fun of decorating and personalising the venue to suit your style.

Owned and managed by Avon Wildlife Trust, all profits are gift-aided back to the Trust to protect local wildlife and inspire people about the importance and benefits of nature. Your wedding at Folly Farm will not only be an incredible day, but will leave an incredible legacy.



Folly Farm is unique in more ways than one - we hope to have the opportunity to share this extra special venue with you.

Your stay

Folly Farm is a very flexible venue and can cater for any style of wedding. All of our wedding packages include 2-night hire, so you have plenty of time to set up decorations, unpack and catch up with friends and family. So, on the wedding day, there is nothing for you to do except enjoy the celebrations!

Day of Arrival

- **Check-in from 2pm**
Settle in to your bedrooms, show your friends and family around the venue.
- **Access to function rooms from 5pm**
Begin the preparations for your big day with friends and family lending a hand.
- **Dinner in The Old Dairy**
A relaxed dinner with family and friends. This can be either self-catered - using the professional kitchen - or a menu of your choice can be served by our in-house caterers*.

* Please contact us for menus and prices.





Your Wedding Day

- **Breakfast in The Old Dairy**
This can be either self-catered using the professional kitchen or a menu of your choice will be served by our in-house caterers*.
- **Wedding Preparations**
We're sure you'll be busy getting ready but your guests may wish to explore the 250-acre nature reserve before they begin to get ready for your big day.
- **The Main Event**
The day you've been waiting for is finally here! Relax, enjoy, and let us look after you and your guests.
- **Gentle Wind Down**
As we are located on a nature reserve, amplified music must be switched off by midnight, and the licensed bar will close. Leaving you free to finish the evening with drinks under the stars by the fire pit.

Day of Departure

- **Breakfast in The Old Dairy**
Self-catered or a menu of your choice will be served by our in-house caterers*.
- **Check out by 11am**
Wish your guests a fond farewell and head off home with memories of your special day.

* Please contact us for menus and prices.



Ceremony

Folly Farm is a fully-licensed wedding venue, so you can book registrars for your friends and family to witness the wedding. Alternatively, you can use a celebrant, or go to a local church for your ceremony, if you prefer.

Choose to hold your ceremony in the charming oak-beamed converted barn, the traditional Old Dairy, or the glass atrium filled with natural light. Alternatively, you can choose to say '*I do*' outside with a ceremony overlooking Chew Valley Lake or beneath the apple trees in the orchard.

We have five licensed ceremony locations available – three indoor and two outdoor. The team will discuss options with you based on your guest numbers and plans.

The Willow Courtyard

This outdoor courtyard is our most popular ceremony space with a spectacular view across the Chew Valley.

The Orchard Garden

With your guests sat on hay bales underneath the apple trees, this is a cosy and characterful location for your ceremony.

The Oak Barn

Our main indoor space; seating up to 100 guests for your ceremony.

The Atrium

A more modern space for up to 60 guests with a glass roof.

The Old Dairy

A cosy indoor space for up to 60 guests, with an original inglenook fireplace and a wood burning fire; perfect for intimate ceremonies especially during Autumn and Winter.

We will always do our best to get you outdoors if that's where you want your ceremony to be. However, we will always have a wet-weather contingency plan and have similarly-sized indoor locations next to both outdoor spaces, together we can make a last-minute decision on the morning if the weather is looking uncertain.

Rest assured, the team at Folly Farm will work with your ushers to ensure that everyone knows where to sit and get the bridal party ready.

The wedding couple are responsible for contacting and booking the registrar. To arrange your ceremony, the contact details are:

Bath Register Office, Guildhall, High Street, Bath BA1 5AW.

Telephone: 01225 477234

Email: register_office@bathnes.gov.uk

Confetti

After the ceremony, whilst you relax in your suite, we will prepare your guests and photographer for a confetti shot in your desired location. When everyone is ready, you will join us for photos and lead the way to your drinks reception.

You will need to provide your own confetti for your guests, which must be biodegradable and eco-friendly, dried flower petals are always the best option.

Drinks Reception

You can hold the drinks reception, which usually lasts a couple hours, in a variety of locations:-

The Main Lawn - overlooking Chew Valley giving elegance to the reception, perfect for some garden games and lots of space for group photos.

The Orchard Garden - underneath the apple trees giving the reception real charm.

The Atrium – during the summer months this space offers lots of natural light and with the double doors open there will be plenty of room to spread outdoors. As the seasons change, The Atrium can be altered to create a light and cosy space with the wood burner lit.

Drinks Options

As part of the drinks package, we can provide a variety of different options, from Prosecco to Bellini's through to Gin bar and Pimm's.

Canapes

Our in-house caterers will prepare your choice of canapes to be served by the team throughout the drinks reception, whilst your guests mingle prior to the wedding breakfast.





Wedding Breakfast

Our menus are extensive, and can be presented as fully-plated meals, or sharing platters. All of our produce is local and organic, with elements grown in our own kitchen garden, and cooked fresh in-house. Prior to your big day, we will invite you to a menu tasting to ensure you are happy with your final choices and presentation.

We provide round tables and Chivari chairs for 100 people included in the package. Should you wish to use banquet tables, you will need to hire extra furniture from external suppliers.

All crockery and cutlery is included in the catering packages, and we can cater for all dietary requirements.

There are a choice of locations to hold your wedding breakfast:

The Oak and Willow Barns - 100 guests split across two levels or in the oak barn with a marquee extension.

The Oak Barn 75 guests on round tables

The Oak Barn 82 guests on banquet tables

The Old Dairy 40 guests

Marquees can be hired to extend the level of the oak barn allowing a wedding reception up to 150.

Evening Food

Later in the evening, we will serve your chosen Evening food. Our menu is extensive, and takes into account different Wedding themes, and times of year.

For example, on a summer's night, you may decide to enjoy a 'Dirty Burger' – a Beef burger with smoked bacon, mature Cheddar, tomato, pickles, and sauces served in a brioche bun.

Or vegan pulled jack fruit, tangy BBQ and crisp salad with naked coleslaw on the side.

Alternatively, on a winter's night, you may choose our Mac 'n' Cheese station served in street food containers with sprinkles of bacon bits, crispy onion, extra cheese, chilli oil, pesto or garlic mushrooms.

For your wedding cake, we also provide a rustic log cake stand and decorative cake knife and we will cut, portion and serve your cake alongside the evening food.

Drinks Package

For your wedding day we provide a drinks package for you and your guests and this is flexible in what is provided at each element, but it is generally based on:

- 2 drinks per person in the post-ceremony drinks reception
- Half a bottle of wine per person for the meal
- 1 drink per person for the speeches

This package also includes all glassware and staffing.



Licensed bar

The Willow Barn has a fully stocked and licensed bar featuring Chew Valley Gins, Butcombe Ales and a must have for the West Country 'Thatchers cider'. We are a cashless bar so your guests can use their card, alternatively there is an option to put some money behind the bar if you wish.

Additional catering

Arrival night dinner

The Old Dairy can accommodate everyone staying at the venue for a relaxed dinner on your arrival night. You will have use of the professional and fully equipped catering kitchen if you want to self-cater, or the BBQ in the Dairy Courtyard.

If you are self-catering, you can get a supermarket delivery right up to the kitchen door.

Alternatively, our in-house catering team can cater this dinner for you, or provide a drop-off service where we make the food and leave it for you to finish off and serve yourselves.

Drinks

As there is no licensed bar on the arrival night, you are welcome to bring all of your own drinks for this night without any corkage fees.

The Atrium offers the perfect seating area for those wishing to celebrate a little longer by winding down with a drink before they head off to bed.

Morning Breakfasts

Also served in the Old Dairy on the wedding day and day of departure, you can self-cater or we can cater for you.



Accommodation at Folly Farm

The Farmhouse – 10 bedrooms

Sleeping up to 28 guests, The Farmhouse offers comfortable country-style accommodation with all bedrooms leading off from the central atrium.

Room No.	Room Layout and Facilities	Location	Max. Occupancy
Room 11	Double en-suite and bunk beds	Ground floor	4 guests
Room 12	Double en-suite	Ground floor	2 guests
Room 14**	Bunk beds with toilet and wash basin	Ground floor	2 guests
Room 21*	Bunk beds with wash basin	First floor	2 guests
Room 22	Double en suite and bunk beds	First floor	4 guests
Room 23	Double en-suite	First floor	2 guests
Room 24*	Bunk beds with toilet and wash basin	First floor	2 guests
Room 31	Double en-suite	Second floor	2 guests
Room 32	Double en-suite and bunk beds	Second floor	4 guests
Room BM**	2 sets of bunk beds	Basement	4 guests

TOTAL: 28 guests

**Rooms 21 and 24 share bathroom facilities.*

***Rooms 14 and BM share bathroom facilities.*

Double rooms can be requested as twin beds in advance.

The Studios – 10 bedrooms

Sleeping up to 30 guests, the ground floor studio rooms are located just a stone's throw from the Farmhouse, all with views over Chew Valley Lake, the Mendip Hills and beyond.

Room Number	Room Layout and Facilities	Max. Occupancy
Studios 1-3	Double/twin and two singles* en-suite	4 guests per room
Studio 4-7	Double/twin and single** en-suite	3 guests per room
Studio 8 - Bridal Suite	Double en-suite	2 guests
Studios 9 and 10	Double en-suite	2 guests

TOTAL: 30 guests

**Two full size single day beds suitable for adults or children*

***One full size single day bed suitable for adults or children*

What's Included?

- Bed linen and towels
- Complimentary Bramley toiletries
- In-room tea and coffee making facilities
- Use of Atrium, Old Dairy and professional kitchen
- Wifi access
- Access to 250-acre nature reserve.

Wedding Packages

2025

Option 1 – Standard Package

Including exclusive use of the venue and all 20 bedrooms for two nights:

<u>Weekends</u>		<u>Midweek</u>		<u>Bank Holidays</u>	
Apr – Sep	£10,900	Sun - Tues	£7,900	Sun – Tue	£9,850
Mar & Oct	£9,550	Mon – Wed	£7,900		
Nov – Feb	£6,950	Wed – Fri	£7,900		

The above option allows the wedding couple to pay for all accommodation and directly manage the allocation of rooms to friends and family, with the option of recharging guests as desired. A rooming list will be required prior to guests' arrival.

Option 2 – Flexible Package

Including exclusive use of the venue and the Bridal Suite (Studio 8) for two nights, with accommodation available for guests to book directly with Folly Farm:

<u>Weekends</u>		<u>Midweek</u>		<u>Bank Holidays</u>	
Apr – Sep	£8,950	Mon – Wed	£6,750	Sun – Tue	£8,050
Mar & Oct	£7,900	Wed – Fri	£6,750		
Nov – Feb	£5,800				

This option requires guests to contact Folly Farm to reserve and pay for their own accommodation – prices can be found below. Rates are per person, per night.

	<u>Room Only</u>	<u>Bed & Breakfast</u>
Studio Rooms	£45.00	£61.50
Farmhouse Rooms	£36.00	£52.50

When booking the Flexible Package, the following conditions apply:

Minimum Occupancy: The flexible package requires a minimum occupancy of 25 guests per night for the two nights. Should the minimum occupancy not be met by eight weeks prior to the date of the event, a surcharge of £600 will be added to the final invoice.

Breakfast: Rooms must be sold as all bed and breakfast or all room only (self-catered). This will be agreed in advance between Folly Farm and the wedding couple.

Wedding Party and Special Guests: For a period of four weeks after the wedding booking is confirmed, accommodation can be open for sale exclusively to the bridal party and special guests to ensure key guests have rooms on-site.

All rates are inclusive of VAT.

Price Breakdown

This is an example of a full cost breakdown for 75 guests during the day and 100 in the evening.

SUMMER WEEKEND FRIDAY TO SUNDAY 2025

£10,900.00	– Standard Venue Hire including 20 bedrooms to sell back to your own guests
£487.50	– Post-ceremony canapes - 3 per person - £6.50 x 75 guests
£3,562.50	– Main Reception – 3 course reception meal £47.50 x 75 guests
£70.00	– Table Cloths - £10 x 7 tables
£112.50	– Napkins - £1.50 each x 75 guests
£1,725.00	– Drinks package - £23.00 x 75 – breakdown in pricing pack
£650.00	– Evening Food – hot hand held - £6.50 x 100 guests
£17,507.50	– Sub Total
£4,050.00	– Estimated income from room sales – breakdown below
£13,457.50	– TOTAL

MID WEEK RATE

SUNDAY TO TUESDAY. MONDAY TO WEDNESDAY. WEDNESDAY TO FRIDAY 2025

£7,900.00	– Standard Venue Hire including 20 bedrooms to sell back to your own guests
£487.50	– Post-ceremony canapes - 3 per person - £6.50 x 75 guests
£3,562.50	– Main Reception – 3 course reception meal £47.50 x 75 guests
£70.00	– Table Cloths - £10 x 7 tables
£112.50	– Napkins - £1.50 each x 75 guests
£1,725.00	– Drinks package - £23.00 x 75 – breakdown in pricing pack
£650.00	– Evening Food – hot hand held - £6.50 x 100 guests
£14,507.50	– Sub Total
£4,050.00	– Estimated income from room sales – breakdown below
£10,457.50	– TOTAL

MARCH OR OCTOBER WEEKEND FRIDAY TO SUNDAY 2025

£9550.00	– Standard Venue Hire including 20 bedrooms to sell back to your own guests
£487.50	– Post-ceremony canapes - 3 per person - £6.50 x 75 guests
£3,562.50	– Main Reception – 3 course reception meal £47.50 x 75 guests
£70.00	– Table Cloths - £10 x 7 tables
£112.50	– Napkins - £1.50 each x 75 guests
£1,725.00	– Drinks package - £23.00 x 75 – breakdown in pricing pack
£650.00	– Evening Food – hot hand held - £6.50 x 100 guests
£16,157.50	– Sub Total
£4,050.00	– Estimated income from room sales – breakdown below
£12,107.50	– TOTAL



NOVEMBER, DECEMBER, JANUARY OR FEBRUARY WEEKEND FRIDAY TO SUNDAY 2025

£6950.00	– Standard Venue Hire including 20 bedrooms to sell back to your own guests
£450.00	– Post-ceremony canapes - 3 per person - £6.00 x 75 guests
£3,375.00	– Main Reception – 3 course reception meal £45.00 x 75 guests
£70.00	– Table Cloths - £10 x 7 tables
£112.50	– Napkins - £1.50 each x 75 guests
£1,612.50	– Drinks package - £21.50 x 75 – breakdown in pricing pack
£625.00	– Evening Food – hot hand held - £6.25 x 100 guests
£13,557.50	- Sub Total
£4,050.00	– Estimated income from room sales – breakdown below
£9,507.50	– TOTAL

BANK HOLIDAYS 2025

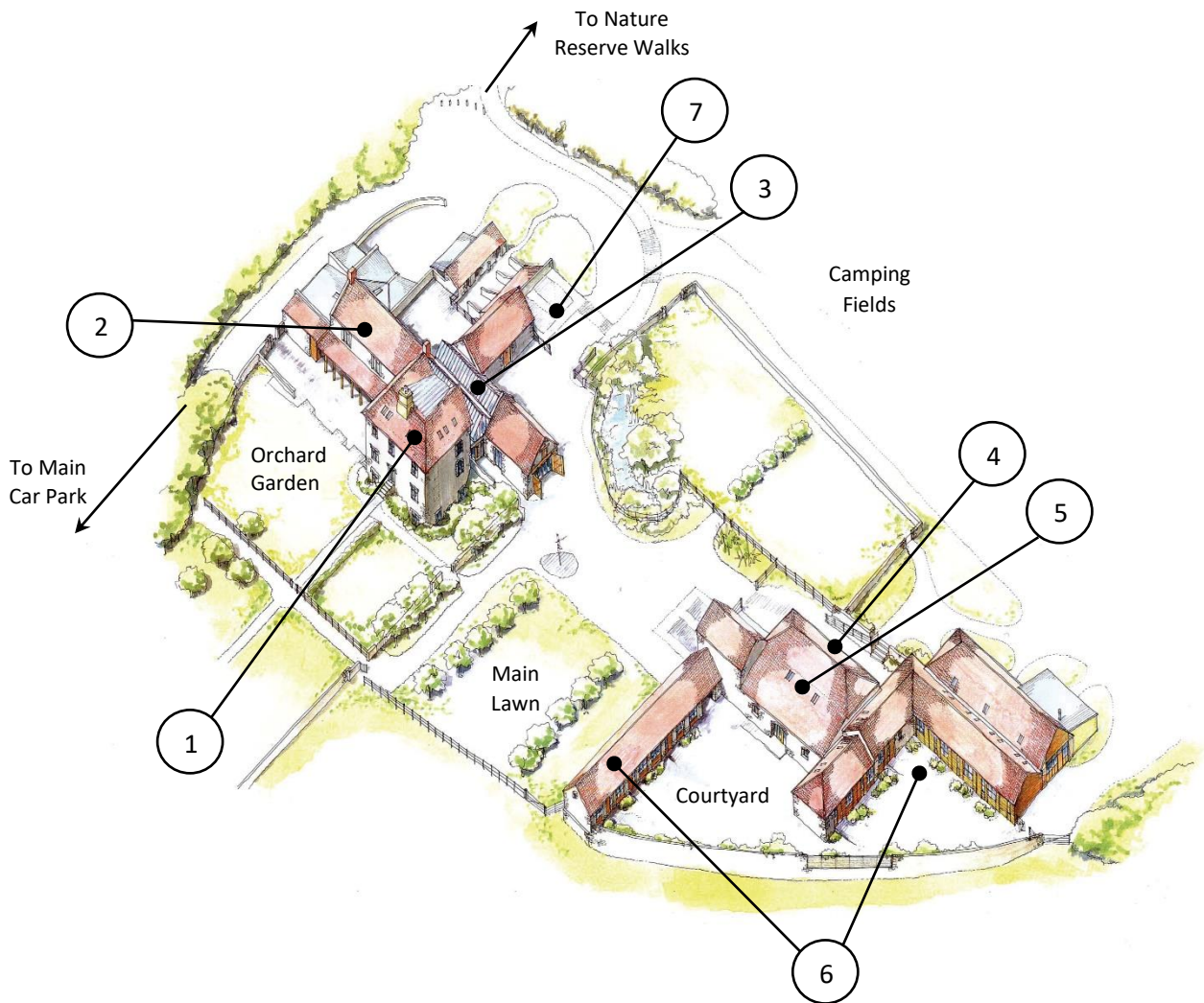
£9850.00	– Standard Venue Hire including 20 bedrooms to sell back to your own guests
£450.00	– Post-ceremony canapes - 3 per person - £6.00 x 75 guests
£3,375.00	– Main Reception – 3 course reception meal £45.00 x 75 guests
£70.00	– Table Cloths - £10 x 7 tables
£112.50	– Napkins - £1.50 each x 75 guests
£1,612.50	– Drinks package - £21.50 x 75 – breakdown in pricing pack
£625.00	– Evening Food – hot hand held - £6.25 x 100 guests
£16,457.50	- Sub Total
£4,050.00	– Estimated income from room sales – breakdown below
£12,407.50	– TOTAL

Room Sale Income

We have used the example of you being able to recover £4050.00 from charging guests for their room sales at £45.00 per person per night with an estimate of 45 guests staying with you for 2 nights.

Although you are able to charge what you want so there is the potential to increase that figure.

Should you be interested in our flexible package, please contact us for further information and prices.



-
1. The Farmhouse (10 bedrooms)
 2. The Old Dairy Dining Room & Kitchen
 3. The Atrium
 4. The Oak Barn
 5. The Willow Barn
 6. The Studios (10 bedrooms)
 7. Disabled Parking and Electric Charging Points
-

Useful Contacts and Suppliers

Bath Register Office

Bath Register Office, Guildhall, High Street, Bath BA1 5AW
www.bathnes.gov.uk
registrar_office@bathnes.gov.uk
01225 477234

It is the responsibility of the wedding couple to book the registrar.

Marquees

+44 (0)7444 025633

Abbas Marquees

www.abbasmarquees.co.uk
enquiry@abbasmarquees.co.uk
Phone 01761 865065

Sam Gilraine Photography

samgilraine@gmail.com
+44 (0)778 6565645

Florists

Classic Flower Designs

www.classicflowerdesigns.co.uk
Contact: Charlotte
charlotte@classicflowerdesigns.co.uk
+44 (0)1275 333095

Honeydew Moments

www.honeydewmoments.co.uk
Contact: Natasha
natasha@honeydewmoments.co.uk
+44 (0)7581 353732

Hair and Make-Up

South West Bridal Hair and Make-Up

www.bristolbridalhairmakeup.com
Contact: Emily Woolley
bristolbridalhairmakeup@hotmail.com
+44 (0)7763 915420

Wedding Cakes

Bath Baby Cakes

www.bathbabycakes.com
Contact: Hannah
hannah@bathbabycakes.com
Phone 01225 444065

DJ

Bristol Disco Hire

www.bristoldiscohire.co.uk
Contact: Julian
+44 (0)7810 440 338

Photographers

George Chan

www.george-chan-wedding-photography.com
georgelchan@gmail.com
Contact: George Chan
07811347946

Bell Tents

Tinkerbell Tent Hire

www.tinkerbelltenthire.co.uk
Contact: Kate or Paul
hello@tinkerbelltenthire.co.uk
+44 (0)7494 569808

Rich Howman Photography & Film

weddings@richhowman.com
Contact: Richard Howman

Frequently Asked Questions

Can we have candles in the function rooms?

Yes, but they must be in a container taller than the height of the flame (i.e. tealights in jam jars, pillar candles in storm jars, etc).

Do you charge for tables, chairs, cutlery, crockery and glassware?

10 round tables and 100 Chivari chairs are included. Table linen is extra as this depends on guest numbers. All crockery and cutlery is included in the catering quote and all glassware is included in the drinks package.

Can we decorate the venue?

The team will set up your tables and centre pieces with you and your suppliers. You are welcome to bring other decorations and theming and put these up on the arrival night.

Can we bring confetti?

Yes. All confetti must be biodegradable, and natural dried petals are best. It is best to advise your guests that you will be providing confetti and ask them not to bring their own.

Do you have microphones and a PA system for the speeches?

Yes – these can be hired at an additional charge.

Do you charge extra for civil ceremonies?

Folly Farm does not charge extra for civil ceremonies however, there are costs associated with the ceremony. This is payable directly to the registry office and not Folly Farm.

Can we bring our own music?

Yes, of course you can. Feel free to use both our Bluetooth sound system and integral speakers. These are located in both the barn, willow courtyard and lawn. They can also be connected via an SD card, AUX or USB cable to your device. We recommend that you download your chosen music prior to arrival and nominate one of your guests to control the music.

How many car parking spaces do you have for our guests?

We have approximately 70 car parking spaces in our main car park, 2 electric charging points (free to use), plus a number of disabled car parking spaces just a short, level walk from the Farmhouse. There is also a drop-off point for less able guests.

Who is responsible for booking the registrar and what are the contact details?

The wedding couple are responsible for contacting and booking the registrar. To arrange your ceremony the contact details are:
Bath Register Office, Guildhall, High Street, Bath BA1 5AW.
Telephone: 01225 477234
Email: register_office@bathnes.gov.uk

Is there an additional charge for evening guests?

No – there is no additional charge for evening guests (except food and drink).

What time does the bar close and music have to stop?

All licensed activity including the sale of alcohol and any amplified music must stop by midnight.

What time do evening guests have to leave?

There is no set time for guests to leave after the evening entertainment ends.

Can we have fireworks in the evening?

Fireworks are not permitted due to our nature reserve location. Sparklers are allowed.

Are pets allowed?

Unfortunately, we cannot allow any pets at Folly Farm as we are situated on a nature reserve.

Can we supply our own drinks?

You are welcome to bring your own drinks for the arrival night, with no corkage fee. For the wedding day, all drink will be supplied by the venue and you and your guests are not permitted to supply your own. Therefore, we cannot offer a corkage package for the wedding day.

Can we talk to the team about our menus and drinks?

Yes, of course. The same team manages the venue and catering, so we will discuss all of your plans with you. You will also be offered a tasting session prior to your big day to finalise your menus.

Do we have to use the suppliers on your recommended supplier list?

Of course not, you are more than welcome to use any suppliers that you wish, with the exception of caterers.

What time do we need to check out of the bedrooms?

By 11am. Late check-out can be arranged for an additional charge (depending on availability).

How do we keep in touch with you?

For any questions, please contact us on 01275 331590 or email weddings@follyfarm.org

Where our team will be more than happy to assist you.

How To Find Us

Address

Folly Farm Centre
 Stowey
 Pensford
 Bristol
 BS39 4DW

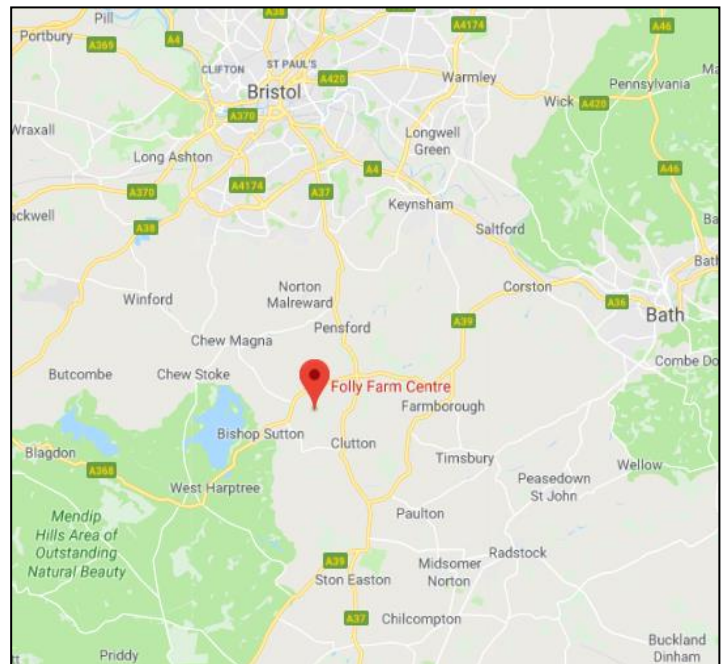
Tel: +44 (0)1275 331 590

Email: weddings@follyfarm.org

Website: www.follyfarm.org

Folly Farm is located within the Somerset village of Stowey and lies within the picturesque Chew Valley, approximately 7 miles south of Bristol and 8 miles west of Bath. It is accessible via the A37 and A368.

We are a remote venue so would suggest using private hire transport and pre-booking taxis.



Walking and Cycling

Folly Farm is easily accessible by bicycle, and the West County Way, part of the National Cycle Network, passes close by. For walkers, two well-known long distance footpaths, Monarch's Way and Mendip Way, pass close to Folly Farm.

Getting Here by Car

Free car parking is available, with two free electric car charging points for electric and hybrid vehicles.

From Bristol: Take the A37 south and go through Pensford. At the roundabout, turn right onto the A368 towards Bishop Sutton. After two miles, go past the turning to Chew Magna and take the next small turning on your left very shortly after, just before reaching Stowey.

From Bath: Take the A39 through Newton St Loe, taking the second exit (past The Globe pub). Continue straight through Marksbury and continue onto the A368 (the right hand side of the petrol station after the traffic lights). At the roundabout, take the second exit towards Bishop Sutton. After two miles, take the small turning on your left, just before reaching Stowey.

Taxis

We would recommend pre-booking taxis with the following local companies. If they are unavailable then we can provide a longer list of companies in the area.

Chew Cars	07831 858765 / 07871 488133
Reza Taxi	07938 040928

Folly Farm is an environmentally sustainable venue complete with solar panels, a biomass boiler, rainwater harvesting, a reed bed sewage system and only eco-friendly cleaning products.

All profits from Folly Farm go straight to Avon Wildlife Trust.

To check availability or to book
please contact us on 01275 331590
or email weddings@follyfarm.org